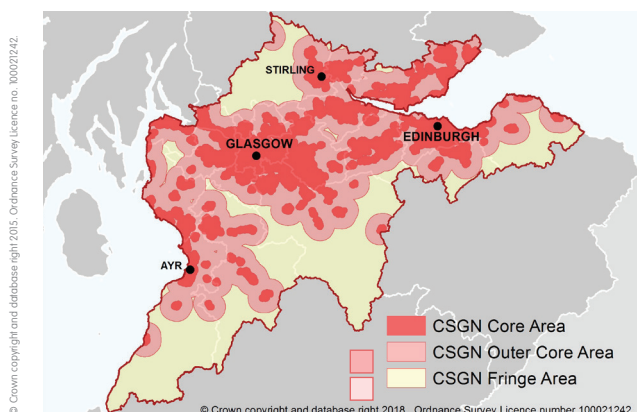




A guide to the CSGN Contribution for new woodland creation in Central Scotland, Ayrshire and parts of Fife

Central Scotland Green Network Contribution and the Forestry Grant Scheme

The Central Scotland Green Network (CSGN) Contribution is a single capital payment which applies to eligible Forestry Grant Scheme (FGS) woodland creation planting options. It is only available in the CSGN area and is offered at three rates (max £2 500/ha). This payment recognises the additional costs of planting and establishing new woodlands within the area where they will provide environmental, economic and social benefit and help to deliver the aims of regional forestry and woodland strategies.



To apply for the CSGN Contribution, your application needs to:

- be eligible for the relevant FGS Woodland Creation Option(s)
- be located within the CSGN Contribution Area
- support the delivery of the relevant Forest and Woodland Strategy

Woodland Creation Options and Rates

The CSGN Contribution is paid at £2,500/ha in the Core Area, £1,500/ha in the Outer Core Area and £750/ha in the Fringe Area. In the Outer Core Area up to 65 hectare per application will be eligible for the Contribution, while in the Core and Fringe Areas the limit will be up to 40 hectares per application. It will be paid on top of selected options at either standard or target area initial planting payment rates.

The table below shows the Target Area payment rates plus CSGN Contribution for the eligible Woodland Creation. A full list of payment rates is available in the FCS Technical Help webpages at www.forestry.gov.uk/scotlandgrants.

You can also apply for support for fencing and tree protection. Afforested land will still receive its Basic Payment Scheme entitlement if applicable.

CSGN Contribution Area

To find out if you are in the Outer Core, Core or Fringe Area, use the online [FCS Map Viewer](#). Open the FCS Grants & Regulations folder (located on right hand side of page) and select the FGS (2014–20) Target Areas folder and 'CSGN Contribution Area' option. Zoom in and the Core Area will appear as red cross-hatch and the Fringe Area will appear in red hatch.

Over 50% of the woodland creation planting option must sit within either the Outer Core, Core or Fringe area to be eligible.

Supporting Forestry and Woodland Strategies (FWS)

Forestry and Woodland Strategies (FWS) are used to provide a policy and spatial framework which maximises the contribution of woodland and forestry to the people, environment and economy of the area. The CSGN area is covered by the following Forestry and Woodland Strategies: Ayrshire & Arran; Edinburgh & Lothians; Falkirk; Fife; Glasgow & Clyde Valley and Stirling & Clackmannanshire. These FWS are available online or from your local FCS Conservancy office.

Using the 'CSGN Forestry and Woodland Strategy Area' layer in the FGS (2014–20) Target Areas folder on the FCS Map Viewer, you can find out which FWS covers your application. You should refer to the FWS to find out how your planting option will support its objectives for softwood, mixed or native woodland expansion:

- To meet local FWS objectives for softwood expansion, you can use the Conifers and Diverse Conifers planting options.
- To meet local FWS objectives for mixed woodland expansion, you can use the Diverse Conifers, Broadleaves and Small or Farm Woodland options.
- To meet local FWS objectives for native woodland expansion, you can use the Native Upland Birch and Native Broadleaves options.

Woodland Creation option	Target Area Initial Planting Payments + CSGN Contribution								
	Core Area (£2 500/ha)			Outer Core Area (£1 500/ha)			Fringe Area (£750/ha)		
	Initial planting payment (£/ha)	Annual maintenance (£/ha/year for 5 years)	Total payment (£/ha)	Initial planting payment (£/ha)	Annual maintenance (£/ha/year for 5 years)	Total payment (£/ha)	Initial planting payment (£/ha)	Annual maintenance (£/ha/year for 5 years)	Total payment (£/ha)
Conifer	4 660	234	5 830	3 660	234	4 830	2 910	234	4 080
Diverse conifer	4 930	378	6 820	3 930	378	5 820	3 180	378	5 070
Broadleaves	5 740	594	8 710	4 740	594	7 710	3 990	594	6 960
Native upland birch	4 570	144	5 290	3 570	144	4 290	2 820	144	3 540
Native broadleaves	4 570	306	6 100	3 570	306	5 100	2 820	306	4 350
Small/farm woodland	5 200	450	7 450	4 200	450	6 450	3 450	450	5 700

For more information about the CSGN Contribution, visit www.forestry.gov.uk/scotlandgrants or call Forestry Commission Scotland Central Scotland Conservancy Office 0300 067 6006.

